

ELANTRA

2002 ELANTRA



 HYUNDAI

CONTENTS

Warranty	02.03
Styling	04.05
Safety	06.07
Interior	08.09.10.11
Features	12.13
Technology	14.15
GT Style	16.17
GT Interior	18.19
GT Performance	20.21
Grades / Accessories / Specifications	22.23.24.25

For more information, please visit www.hyundaiUSA.com

URE



Elantra GLS in Pewter



Accent GS



Accent GL



Elantra GLS



Santa Fe LX



XG350L





Hyundai Advantage™
AMERICA'S BEST WARRANTY*

Nothing says more about the quality of a product than the way its manufacturer stands behind it. This fact speaks volumes about the only vehicles backed by the Hyundai Advantage™, America's Best Warranty.

With 10 year, 100,000 mile powertrain protection, 5 year, 60,000 mile bumper-to-bumper coverage and 5 year, unlimited miles 24-hour roadside assistance, no car maker offers a better warranty than the Hyundai Advantage™. And even as you appreciate the protection it provides, you'll enjoy something else as well: the confidence you'll feel every time you turn the key.

10 YEAR 100,000 MILE POWERTRAIN PROTECTION
Covers most engine and transaxle components.

5 YEAR 60,000 MILE BUMPER-TO-BUMPER COVERAGE
Covers nearly every new vehicle component.

5 YEAR UNLIMITED MILES 24-HOUR ROADSIDE ASSISTANCE
Covers towing (including accident-related), lock-out, flat tire and jump starting.

5 YEAR 100,000 MILE ANTI-PERFORATION WARRANTY
Covers corrosion-related rust-through of body sheet metal from inside to out.

*See dealer for LIMITED WARRANTY details.

DRIVEN



Elantra GLS in Pewter

STYLING

A truly original expression of style can be thoroughly invigorating.

As proof, we present the 2002 Elantra GLS. From jewel-like clear-lens

headlights to sculpted rear deck, it represents a bold answer to today's

parade of new-car clones, as well as a fusion of form and function.

Consider its very shape. More than just handsome, it's designed to slip

easily through the air, increasing aerodynamic efficiency and minimizing

wind noise. Likewise, Elantra's elegant slim roof pillars ease entry and

exit, while also providing an excellent view of the road. In other words,

the design of the Elantra GLS is stylish enough to get by on looks alone.

And smart enough not to have to.



Heated dual power mirrors are standard on the Elantra GLS.



Aerodynamic clear-lens halogen headlights provide bright, even illumination.



Dual front airbags and front side airbags are best-in-class standard features.



An Anti-lock Braking System (ABS)² with a Traction Control System (TCS)³ is available on the Elantra GLS and GT.



The 3-point front seatbelt pretensioners lock in the event of a moderate to severe frontal impact.



Elantra GLS and GT provide 3-point seatbelts at all seating positions.

SAFETY

A full appreciation of any car's driving experience starts with something very basic: occupant security. That

said, it's reassuring to know that both the 2002 Elantra GLS and GT boast a class-leading array of

advanced safety features. Dual front airbags¹ and front side airbags protect both the driver and front passenger.

Also standard are 3-point seatbelts at all seating positions, along with front seatbelt pretensioners, force

limiters and adjustable anchors. The structure itself contains protective features like built-in front and rear

crumple zones, side-impact door beams, steel roof rails and unit body construction. The Elantra's engine

and several of its major mechanical components are even mounted on a separate chassis subframe for an extra

measure of impact protection. And to help you avoid impacts in the first place, Elantra is designed for

responsive handling and easy maneuverability in a critical situation.

¹The Supplemental Restraint (airbag) System (SRS) is designed to work with the 3-point seatbelt system.

The SRS deploys in certain front-end and/or side-impact conditions where significant injury is likely.

The SRS is not a substitute for seatbelts which should be worn at all times. Children under the age of 13 should be restrained securely in the rear seat. NEVER place a rear-facing child seat in the front seat of a vehicle with a passenger-side airbag. ²Available as part of a specific option package. See dealer regarding availability.

³Available as part of a specific option package. See dealer regarding availability. The Traction Control System (TCS) is meant to enhance conscientious driving habits, and is not a substitute for proper driving procedures.



HYUNDAI

HYBRIDI



ELANTRA

VEN 427

GLS

Elantra GLS in Champagne

INTERIOR

The Elantra GLS cabin is based on the idea that the place where you spend 100% of your driving time should make you feel 100% comfortable. The result is a driving environment that's thoughtfully designed and utterly accommodating. You'll find examples of forward thinking throughout the GLS cabin. For instance, the anatomically contoured, multi-adjustable front bucket seats are formed from a single piece of high-density foam, which retains its shape to provide comfort and support even on long drives. Vital switches and controls are ergonomically positioned for easy access. Gauges are readable at a glance and placed within the driver's natural line of sight. There's a versatile 60/40 split fold-down rear seatback that helps you handle plus-size cargo, as well as an abundance of map pockets and storage compartments to keep your important items at hand. You'll find this kind of thoughtful design throughout the Elantra GLS. After all, any car which so ably handles the road should do no less for its driver.



Standard CFC-free air conditioning helps you stay cool and comfortable.



An AM/FM stereo cassette with 4 speakers is standard on the Elantra GLS.



The handy Auto-down feature fully lowers the driver's window with one touch.



Elantra GLS driver control center (shown with optional/equipment)





Elantra GLS interior in Gray cloth (shown with optional equipment)



Elantra GLS in Ocean Blue

FEATURES

If you've never experienced an Elantra GLS, you'll be delighted by its array of luxurious standard amenities, including air conditioning, power windows, door locks and heated mirrors, tilt steering column, AM/FM stereo cassette, 60/40 split fold-down rear seatback, and a quartz digital clock. Elantra GLS also comes with plenty of standard features designed to make your driving more enjoyable. There's a handy center console with two-level storage compartment and armrest, dual beverage holders, theater-dimming entry lighting, remote hood, fuel filler door and trunk releases, and a multi-adjustable driver's seat with lumbar support. In fact, about the only thing the Elantra GLS doesn't give you is a long list of expensive options. For that, you'll have to try the competition.



The available 2-way power glass moonroof tilts up or slides open.



An AM/FM stereo CD player with 6 speakers is available on the Elantra GLS.



The center console includes a two-level storage compartment, dual beverage holders and a padded armrest.



To better handle bulky items, the Elantra GLS comes with a 60/40 split fold-down rear seatback.



Elantra GLS in Pewter

TECHNOLOGY

The Elantra GLS certainly disproves the idea that beauty is only skin deep. Under the hood is a 2.0-liter,

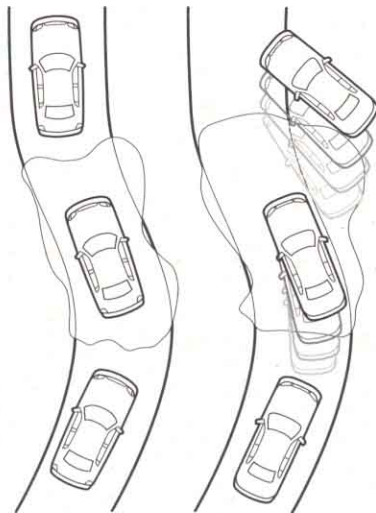
140-horsepower DOHC 4-cylinder engine that features an air intake resonator and fluid-filled hydraulic

engine mounts for added smoothness and quietness. The fully independent suspension utilizes quick-response,

gas-filled shock absorbers for nimble handling and a remarkably smooth ride. And the available 4-speed

automatic transmission uses computer-controlled logic for optimum performance in a variety of driving

conditions. Also available is an Anti-lock Braking System (ABS)¹ with 4-wheel disc brakes and a Traction



Control System (TCS)²: Designed to enhance driver control in severe conditions,

the TCS activates upon detecting a loss of traction, then applies corrective

action until traction is restored.

¹Available as part of a specific option package. See dealer regarding availability. ²Available as part of a specific option package. See dealer regarding availability. The Traction Control System (TCS) is meant to enhance conscientious driving habits, and is not a substitute for proper driving procedures.

The advanced Traction Control System (TCS)² available on the Elantra GLS and GT enhances driver control in severe situations.



The available 4-speed automatic transmission uses computer control for optimum performance.



Elantra's 140-horsepower multi-valve DOHC engine virtually eliminates major scheduled maintenance.



Elantra GT in Pewter

GT STYLE

Presenting the 2002 Elantra GT, a strikingly handsome sedan that offers performance, versatility and value, all with a distinctly European flair. Besides a dashing appearance, the GT's 5-door silhouette offers a new world of utility. The low lift-over cargo access lets you load and maneuver bulky items easily. And thanks to its generous cargo area and a 60/40 split fold-down rear seatback, the Elantra GT offers carrying capacity beyond that of a conventional sedan (a nice feature to have when toting skis, surfboards or even a week's worth of groceries). The GT is also distinguished by 5-spoke aluminum alloy wheels, unique grille and headlights, an aerodynamic front air dam with integrated fog lights, rear window wiper/washer, sporty black bodyside moldings, and even a couple of hot new colors. With so many standard features, the Elantra GT is obviously a very smart, sensible buy. And so great looking, no one ever has to know.



Standard 5-spoke, 15-inch alloy wheels give the GT a handsome finishing touch.



The Elantra GT's front air dam houses integrated fog lights to aid driver visibility.



Elantra GT driver control center

GT INTERIOR

Given the Elantra GT's ability to multitask, it should come as no surprise that its roomy, comfortable cabin is also a great place to conduct the business of driving. Standard amenities include a leather-trimmed interior, leather-wrapped steering wheel and shift knob, air conditioning, power windows, door locks and heated mirrors – and the standard equipment doesn't stop there. Also on board are an AM/FM stereo and CD player with six speakers, a remote keyless entry system with alarm, and a steering wheel-mounted cruise control you can operate while keeping your attention on the road. The Elantra GT cabin combines all this comfort with driver-pleasing functionality. There's an anatomically contoured, reclining driver's seat with adjustable lumbar support, a high-contrast, purple-illuminated instrument cluster and a multi-function electronic trip computer that displays current and elapsed time, distance traveled and miles to empty. And of course, the assorted map pockets, storage compartments and beverage holders that make driving easier and more fun. Which is, after all, the whole idea.



Elantra GT's trip computer shows miles traveled, elapsed time, and miles to empty.



The GT's 60/40 split fold-down rear seatback helps you handle plus-size cargo.



An AM/FM stereo CD player with 6 speakers is one of the GT's many cool standard features.

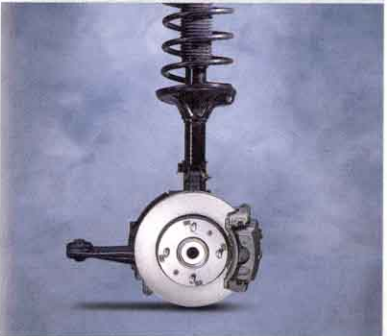
GT PERFORMANCE

Granted, the Elantra GT is pretty inspiring just standing still. Now, imagine the thrill of actually putting one into motion. With a sport-tuned, fully independent suspension and power-assisted rack-and-pinion steering, the Elantra GT offers the kind of responsive ride and handling usually associated with European brands. You'll also find that the GT is one sedan that's as much at home on a winding road as it is on the highway, thanks to its standard Michelin® tires, front and rear stabilizer bars and gas-filled shock absorbers. And because braking is an important part of any car's performance envelope, the GT comes equipped with power-assisted 4-wheel disc brakes, and offers an Anti-lock Braking System (ABS)¹ and Traction Control System (TCS)² designed to enhance driver control in severe conditions.

¹Available as part of a specific option package. See dealer regarding availability.
²Available as part of a specific option package. See dealer regarding availability. The Traction Control System (TCS) is meant to enhance conscientious driving habits, and is not a substitute for proper driving procedures.



The Elantra GT's 2.0-liter DOHC engine produces 140-horsepower with exceptional smoothness and quietness.



A fully independent suspension with sport tuning provides a distinctly European road feel.



Elantra GT in Pewter



ELANTRA GLS

The Elantra GLS includes the following standard features:

Air conditioning • Power windows, door locks and heated mirrors • Dual front airbags¹ • Front side airbags • AM/FM stereo cassette with 4 speakers • 2.0-liter, 140-horsepower, 16-valve, DOHC 4-cylinder engine • Power front disc brakes • Power rack-and-pinion steering • Four-wheel independent suspension • Tilt steering column • Center console with two-level storage compartment • Remote hood, trunk (GLS only) and fuel filler door releases • Bodycolor protective side moldings (GLS only), front and rear bumpers and side mirrors



ELANTRA GT

The Elantra GT includes the Elantra GLS's standard features plus:

Leather seating surfaces • Leather-wrapped steering wheel and shift knob • Trip computer • AM/FM stereo CD player with 6 speakers • Cruise control • 4-wheel power disc brakes • 15" aluminum alloy wheels • Sport-tuned fully independent suspension • Front fog lights • Remote keyless entry system with alarm • Rear window wiper/washer • Purple-illuminated instrument cluster

¹The Supplemental Restraint (airbag) System (SRS) is designed to work with the 3-point seatbelt system. The SRS deploys in certain front-end and/or side-impact conditions where significant injury is likely. The SRS is not a substitute for seatbelts which should be worn at all times. Children under the age of 13 should be securely restrained in the rear seat. NEVER place a rear-facing child seat in the front seat of a vehicle with a passenger-side airbag.

ACCESSORIES

Your Hyundai dealer can show you a full line of genuine Hyundai accessories designed to make driving your Elantra even more enjoyable. To keep your Hyundai looking and running like new, always use genuine Hyundai parts and accessories, which meet our own strict standards for quality and durability.



A custom-fitting trunk net helps keep your cargo in place.



The available roof rack can handle the gear your active lifestyle demands.



Protect your Elantra's finish with a durable, front nose mask.



Available woodgrain trim adds an upscale touch to the interior.

EXTERIOR FEATURES

	ELANTRA GLS	ELANTRA GT
Power Moonroof w/Sliding Sunshade	O ¹	O
Heated Dual Power Mirrors	Bodycolored	Bodycolored
Front Fog Lights	NA	S
Intermittent Rear Window Wiper/Washer	NA	S
Bodyside Molding	Bodycolored	Black
Remote Keyless Entry System w/Alarm	O ¹	S
Bodycolored Bumpers	S	S
Alloy Wheels	A	S

INTERIOR FEATURES

Driver's and Front Passenger's Airbags (SRS)	S	S
Driver's and Front Passenger's Side Airbags (SRS)	S	S
Air Conditioning	S	S
Power Windows w/Auto-down Driver's Window	S	S
Power Door Locks	S	S
Cruise Control	O ¹	S
AM/FM Stereo	w/Cassette and 4 Speakers	w/CD Player and 6 Speakers
Leather Seating Surfaces and Door Panel Inserts	NA	S
Leather-wrapped Steering Wheel and Shift Knob	NA	S
Driver's Multi-adjustable Seat w/Lumbar Support	S	S
Reclining Front Bucket Seats w/Adjustable Head Restraints	S	S
Trip Computer	NA	S
Illuminated Instrument Cluster	Green	Purple
Adjustable Steering Column	S	S
Quartz Digital Clock	S	S
Maplights	S	S
Beverage Holders	S	S
Tachometer	S	S
2-speed/Variable Intermittent Windshield Wipers	S	S
3-point Front Seatbelts w/Pretensioners and Force Limiters	S	S
Adjustable Front Seatbelt Anchors	S	S
Rear 3-point Seatbelts w/Center Lap Belt	S	S
Child-seat Tether Anchors (3)	S	S
60/40 Split Fold-down Rear Seatback	S	S
Rear Window Defroster with Timer	S	S
Low-fuel Indicator Light	S	S
Cargo Area Light	S	S
Door Pocket Storage Compartments	S	S
Driver's and Front Passenger's Vanity Mirrors	S	S
Childproof Rear Door Locks	S	S



Ocean Blue
(GLS w/Beige interior)



Champagne
(GLS w/Beige interior)



Pewter
(GLS w/Gray interior)
(GT w/Dark Gray Leather interior)



Nordic White
(GLS w/Beige interior)



Chianti Red
(GLS w/Beige interior)
(GT w/Dark Gray Leather interior)



Carbon Blue
(GT w/Dark Gray Leather interior)



Midnight Gray
(GLS w/Gray interior)



Black Obsidian
(GLS w/Gray interior)
(GT w/Dark Gray Leather interior)



Rally Red
(GT w/Dark Gray Leather interior)



Beige



Gray



Dark Gray Leather

ENGINE	ELANTRA GLS	ELANTRA GT
Type: Aluminum-alloy Inline 4	S	S
Displacement (liters)	2.0	2.0
Horsepower @ rpm (SAE net)	140 @ 6000	140 @ 6000
Torque (lb.-ft. @ rpm)	133 @ 4800	133 @ 4800
Compression Ratio	10.3:1	10.3:1
Valve Train: 16-valve DOHC	S	S
Fuel System: Multi-port Programmed Fuel Injection	S	S
Ignition System: Electronic	S	S
DRIVETRAIN		
Type:	FWD	FWD
Manual Transmission: 5-speed	S	S
Automatic Transmission: 4-speed	O	O
Final Drive Ratio (MT/AT)	3.65/3.77	3.65/3.77
BODY/SUSPENSION/CHASSIS		
Body Type: Unit Body	S	S
Suspension-front: Independent MacPherson Struts w/Coil Springs	S	Sport-tuned
Suspension-rear: Independent Multi-link w/Coil Springs	S	Sport-tuned
Stabilizer Bar (mm., front/rear)	23/13	24/15
Power-assisted Rack-and-pinion Steering	S	Sport-tuned
Turning Diameter, Curb-to-curb (ft.)	32.5	32.5
Power-assisted Front Disc/Rear Drum Brakes	S	NA
Power-assisted 4-wheel Disc Brakes	O ¹	S
Anti-lock Braking System(ABS) w/Traction Control System	O ¹	O ¹
Wheels	15" Steel w/Full Covers	15" Alloy
Tires: Michelin® All Season	P195/60 R-15	P195/60 R-15
EXTERIOR DIMENSIONS		
Wheelbase (in.)	102.7	102.7
Length (in.)	177.1	177.1
Height (in.)	56.1	56.1
Width (in.)	67.7	67.7
Track (in., front/rear)	58.5/58.1	58.5/58.1
Curb Weight (lbs., MT/AT)	2635/2698	2635/2698
INTERIOR DIMENSIONS		
Head Room (in., front/rear)	39.6/38.0	39.6/38.0
Leg Room (in., front/rear)	43.2/35.0	43.2/35.0
Shoulder Room (in., front/rear)	54.7/53.5	54.7/53.5
Hip Room (in., front/rear)	53.0/55.6	53.0/55.6
Cargo Volume (cu. ft., seat up/down)	12.9	28.3
Passenger Volume (cu. ft.)	94.0	94.0
EPA MILEAGE ESTIMATES*/FUEL CAPACITY		
5-speed Manual (City/Highway)	25/33	25/33
4-speed Automatic (City/Highway)	24/33	24/33
Fuel Capacity (gal.)	14.5	14.5

*EPA estimates for comparison. Your actual mileage will vary with options, driving conditions, driving habits and vehicle's condition. Some accessories are not available on some models. While the information contained in this brochure was correct at time of printing, specifications and equipment can change. No warranty or guarantee is being extended in this brochure and Hyundai reserves the right to change product specifications and equipment at any time without incurring obligations. Please contact your Hyundai dealer for current vehicle specifications.

¹Available as part of a specific option package. See dealer regarding availability.

Standard Features= S Optional Features= O Accessory= A Not Available= NA

HEL

DRIVING IS BELIEVING

Hyundai Motor Finance Company (HMFC) is a wholly owned subsidiary of Hyundai Motor America. Our mission is to provide support in selling new Hyundai vehicles. In addition to installment loans and leases, we provide a wide range of products, including Hyundai Gap Protection (HGP) in the states where permitted by local law. HGP is designed

to protect you from financial obligation if your vehicle is lost or stolen, and your insurance proceeds are not adequate to pay off your HMFC-funded contract. We also offer the Hyundai Protection Plan, the factory-backed extended service contract that fits perfectly with the Hyundai Advantage™, America's Best Warranty*. Our College Graduate Program provides special financing options for qualified graduates and candidates for graduation attending an accredited four-year college, university, nursing school, and graduates from an accredited two-year college.

Ask your dealer about using HMFC and the full range of Hyundai-branded products we offer.

*See dealer for LIMITED WARRANTY details.

 **HYUNDAI**
HYUNDAI MOTOR FINANCE COMPANY

www.hyundaiUSA.com
1-800-826-CARS

NP020-82000 ©2001 Hyundai

 **HYUNDAI**